



Quarterly Report

September 2020

Quarterly Report – September 2020

Highlights

- ✕ **PFS remains on schedule** for delivery in the December quarter with the completion of all major activities during the quarter.
- ✕ **Compilation of formal PFS report nearing completion** pending finalisation of additional metallurgical testwork and peer review process in the December quarter.
- ✕ **PFS work program has delivered** an increased Mineral Resource Estimate for Mulgine Trench with 70% of the mineralisation classified as Indicated and substantial increases in contained metal compared to the November 2014 Mineral Resource Estimate.
- ✕ **Mining studies completed** on the updated geological resource model to support the declaration of a maiden Ore Reserve in the December quarter.
- ✕ **Tungsten identified in top 10 of 24 critical minerals** by Australian Government's Critical Minerals Facilitation Office (CFMO). Tungsten Mining continues to engage with CFMO.
- ✕ **Cash position** – The Company's cash position as at 30 September 2020 was \$21.47m.

Commentary

Tungsten Mining continues to implement its strategy directed at building a tungsten business of scale, with a **current resource inventory of 41 million MTU's (metric tonne units) of WO₃ (tungsten trioxide) and 71,000 tonnes of Mo (molybdenum), 1 million ounces of Au (gold), 44 million ounces of Ag (silver) and 92,000 tonnes of Cu (copper)** (refer accompanying Mineral Resource Statements).

This provides the platform for the Company to become a globally significant player within the primary tungsten market through the development of low-cost tungsten concentrate production.

Tungsten Mining's CEO Craig Ferrier commented, "We are nearing completion of a very substantial body of work undertaken during the course of the Mt Mulgine pre-feasibility study. We are currently completing the balance of work to enable the finalisation and release of the results of the PFS, including additional metallurgical testwork and peer reviews. We remain confident of reporting on the PFS in the December quarter."

Tungsten Mining

Tungsten Mining NL (“the Company”) is focussed on the discovery and development of tungsten deposits in Australia. The Company’s key projects are Mt Mulgine, Big Hill and Kilba in Western Australia, Watershed in north east Queensland and Hatches Creek in the Northern Territory (Figure 1).

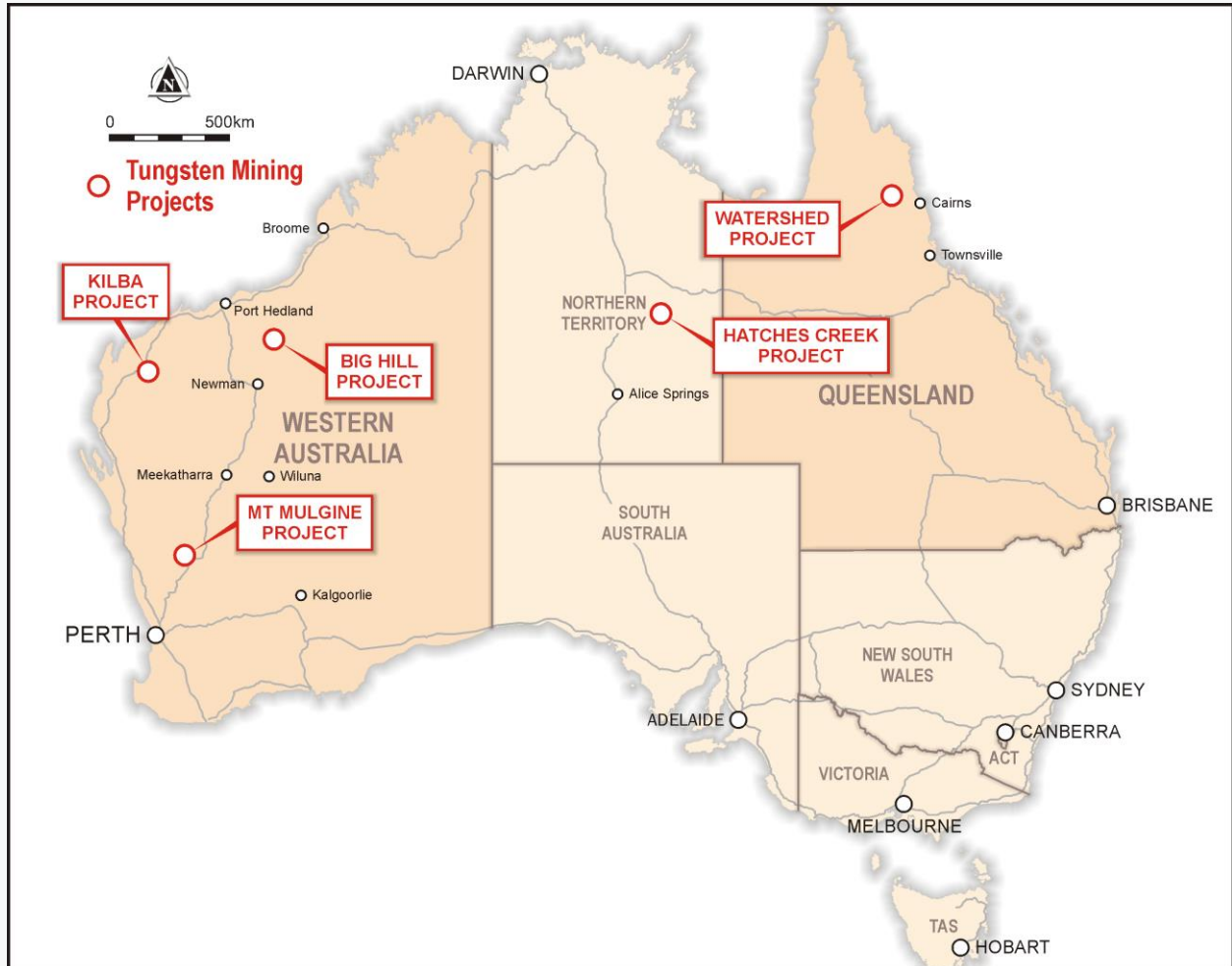


Figure 1. Projects location map

Mt Mulgine Project, Murchison WA

The Mt Mulgine Project remains the highest priority development project for the Company, responsible for the majority of activity during the quarter.

It is located within the Murchison Region of Western Australia, approximately 350km north northeast of Perth. The Company has 100% of the tungsten and molybdenum rights on a contiguous group of tenements that have been the subject of significant previous exploration for tungsten and molybdenum. The Company also has the rights to all by-products from the mining of tungsten and molybdenum, which include gold, silver and copper.

Two near surface Mineral Resources have been delineated at the Mulgine Trench and Mulgine Hill deposits. Currently, there is a combined Mineral Resource Estimate of 259Mt at 0.11% WO₃, 270ppm Mo, 0.12g/t Au, 5g/t Ag and 0.03% Cu (at 0.05% WO₃ cut-off). This is comprised of Indicated Resources of 183Mt @ 0.11% WO₃, 290ppm Mo, 0.13g/t Au, 5g/t Ag, 0.04% Cu and Inferred Resources of 76Mt @ 0.11% WO₃, 240ppm Mo, 0.09g/t Au, 5g/t Ag and 0.03% Cu (refer accompanying Mineral Resource Statements).

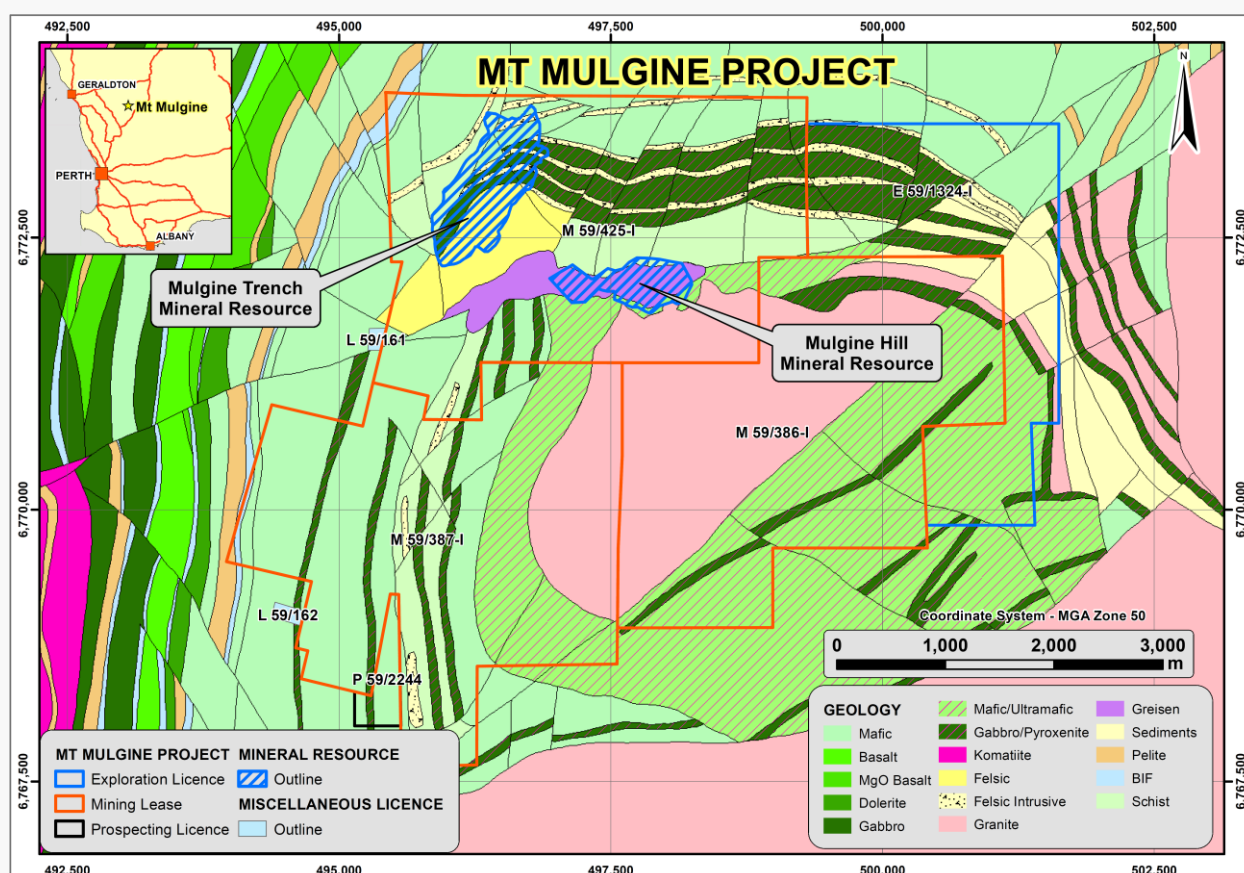


Figure 2. Location of Mulgine Hill & Mulgine Trench Mineral Resources.

Mt Mulgine Development

Additional test work intended to confirm the deportment and recovery of by-product minerals within the proposed flow sheet for the Mt Mulgine processing plant continued in the September quarter.

Work related to formalising the maiden Mulgine Trench Ore Reserve and verifying other inputs to the financial model is also being completed (refer ASX announcement "Market Update – Mt Mulgine PFS" 7 September 2020).

A peer review of the PFS process and non-process infrastructure design and cost estimates commenced in the quarter. The final report is scheduled for completion in the December quarter.

The Native Vegetation Clearing Permit (NVCP) and Mining Proposal for the Hill deposit submitted in the March quarter remains subject to regulatory review and approval processes.

September Quarter Activities

For the September quarter, work continued to focus on advancing the PFS, with major activities being:

- Additional metallurgical test work to confirm the deportment and recovery of by-products;
- Progressing the work required to formalise the maiden Mulgine Trench Ore Reserve;
- Completion of mining study;
- Completion of surface water study;
- Completion of PFS level geo-metallurgical evaluation of the deposit;
- Completed targeted survey of significant annual species, and;
- Development of draft schedule and budget to support the next phase of study; and
- Commencement of PFS peer review

Planned Activities – December 2020 Quarter

The major activities planned for the December quarter will be to;

- Complete the outstanding metallurgical test work;
- Complete peer review of process and non-process design and cost estimates;
- Report maiden Mulgine Trench Ore Reserve;
- Finalise and report PFS;
- Complete schedule and budget to support the next phase of study;
- Engage with regulatory bodies in relation to finalisation of the NVCP approval process; and
- Commence early works on next study phase

Geology and Resources

Mulgine Trench

Tungsten-molybdenum mineralisation at Mt Mulgine is associated with the Mulgine Granite - a high-level leucogranite forming a 2km stock that intrudes the Mulgine anticline (Figure 2). The granite intrudes a greenstone sequence composed of micaceous schists, amphibolite and talc-chlorite schist which were formerly metasediments, mafic and ultramafic rocks respectively.

Tungsten-molybdenum mineralisation at Mulgine Trench is associated with altered and quartz veined mafic and ultramafic units that form a 160 metre to 260 metre thick zone over 1.4 kilometres of strike and dips shallowly towards the northwest (Figure 3). Drilling has intersected stronger molybdenum-gold-silver-copper mineralisation associated with a 50m to 120m wide Lower Tungsten-Molybdenum Domain within the larger tungsten envelope (Figures 4 and 5).

Mulgine Trench Mineral Resource

From the period July 2019 to February 2020, the Company completed resource definition drilling at Mulgine Trench consisting of 280 holes for 47,983 metres. Optiro was engaged to update the Mulgine Trench Mineral Resource Estimate at the completion of the drill program, completing this exercise in May 2020.

This resulted in 70% of the mineralisation classified as Indicated and a 244% increase in tonnes, a 131% increase in contained tungsten and a 283% increase in contained molybdenum compared to the November 2014 Mineral Resource Estimate. In addition, a maiden resource was defined for associated minerals with approximately 1 million ounces of gold, 44 million ounces of silver and 92,000 tonnes of copper associated with the tungsten mineralisation.

Refer to ASX announcements dated 19 December 2019 and 4 May 2020 for updated Mineral Resource Estimates the for Mulgine Trench deposit.

Table 1 details the updated Mineral Resource Estimate at 4 May 2020, above a 0.05% WO₃ reporting cut-off grade:

Table 1: JORC-2012 Mineral Resource estimates for Mulgine Trench at 0.05% WO₃ reporting cut-off grade

Mulgine Trench Indicated and Inferred Mineral Resource – May 2020											
Classification	Mt	WO ₃ (%)	WO ₃ (Kt)	Mo (ppm)	Mo (Kt)	Au (g/t)	Au (Koz)	Ag (g/t)	Ag (Moz)	Cu (%)	Cu (Kt)
Indicated	175	0.11	190	290	51	0.14	770	6	32	0.04	69
Inferred	72	0.11	80	250	18	0.10	230	5	12	0.03	24
Total	247	0.11	270	280	69	0.13	1,000	6	44	0.04	92

Note: Totals may differ from sum of individual numbers as numbers have been rounded in accordance with the Australian JORC code 2012 guidance on Mineral Resource reporting.

Refer ASX Announcement 4 May 2020, “Mineral Resource Estimate Update for Mulgine Trench Deposit”.

Mulgine Hill

At Mulgine Hill, mineralisation is associated with the sub-horizontal upper contact of a mafic schist unit and overlying quartz-muscovite greisen. Tungsten occurs as scheelite in coarse disseminations within the greisen or within numerous quartz and greisen veins in both the mafic schists and the quartz-muscovite greisen. The Mineral Resource Estimate for Mulgine Hill as of 21 March 2019 is 12.3 Mt at 0.16% WO₃ and 125 ppm Mo (Refer to ASX announcement dated 12 April 2019).

Mulgine Trench Long Section - Tungsten

A **B**

MMC508 MMC530 MMC528 MMC404 MMC492 MMC314 MMC377 MMC442 MMC345 MMC380 MMC420 MMC338 MMC468 MMC460 MMC399 MMC398 MMC452 MMC296 MMC429 MMC475 MMC479 MMC437 MMC436 MMC367

400RL 300RL 200RL 100RL

Cross section C - D Cross section E - F

0 100 200m

~ 1.4 km strike length

C **D**

MMC495 MMC494 MMC493 MMC492 MMC491 MMC490 MMC489 MMC488 MMC487 MMC486 MMC485 MMC484 MMC483 MMC482 MMC481 MMC480 MMC479 MMC478 MMC477 MMC476 MMC475 MMC474 MMC473 MMC472 MMC471 MMC470 MMC469 MMC468 MMC467 MMC466 MMC465 MMC464 MMC463 MMC462 MMC461 MMC460 MMC459 MMC458 MMC457 MMC456 MMC455 MMC454 MMC453 MMC452 MMC451 MMC450 MMC449 MMC448 MMC447 MMC446 MMC445 MMC444 MMC443 MMC442 MMC441 MMC440 MMC439 MMC438 MMC437 MMC436 MMC435 MMC434 MMC433 MMC432 MMC431 MMC430 MMC429 MMC428 MMC427 MMC426 MMC425 MMC424 MMC423 MMC422 MMC421 MMC420 MMC419 MMC418 MMC417 MMC416 MMC415 MMC414 MMC413 MMC412 MMC411 MMC410 MMC409 MMC408 MMC407 MMC406 MMC405 MMC404 MMC403 MMC402 MMC401 MMC400 MMC399 MMC398 MMC397 MMC396 MMC395 MMC394 MMC393 MMC392 MMC391 MMC390 MMC389 MMC388 MMC387 MMC386 MMC385 MMC384 MMC383 MMC382 MMC381 MMC380 MMC379 MMC378 MMC377 MMC376 MMC375 MMC374 MMC373 MMC372 MMC371 MMC370 MMC369 MMC368 MMC367 MMC366 MMC365 MMC364 MMC363 MMC362 MMC361 MMC360 MMC359 MMC358 MMC357 MMC356 MMC355 MMC354 MMC353 MMC352 MMC351 MMC350 MMC349 MMC348 MMC347 MMC346 MMC345 MMC344 MMC343 MMC342 MMC341 MMC340 MMC339 MMC338 MMC337 MMC336 MMC335 MMC334 MMC333 MMC332 MMC331 MMC330 MMC329 MMC328 MMC327 MMC326 MMC325 MMC324 MMC323 MMC322 MMC321 MMC320 MMC319 MMC318 MMC317 MMC316 MMC315 MMC314 MMC313 MMC312 MMC311 MMC310 MMC309 MMC308 MMC307 MMC306 MMC305 MMC304 MMC303 MMC302 MMC301 MMC300 MMC299 MMC298 MMC297 MMC296 MMC295 MMC294 MMC293 MMC292 MMC291 MMC290 MMC289 MMC288 MMC287 MMC286 MMC285 MMC284 MMC283 MMC282 MMC281 MMC280 MMC279 MMC278 MMC277 MMC276 MMC275 MMC274 MMC273 MMC272 MMC271 MMC270 MMC269 MMC268 MMC267 MMC266 MMC265 MMC264 MMC263 MMC262 MMC261 MMC260 MMC259 MMC258 MMC257 MMC256 MMC255 MMC254 MMC253 MMC252 MMC251 MMC250 MMC249 MMC248 MMC247 MMC246 MMC245 MMC244 MMC243 MMC242 MMC241 MMC240 MMC239 MMC238 MMC237 MMC236 MMC235 MMC234 MMC233 MMC232 MMC231 MMC230 MMC229 MMC228 MMC227 MMC226 MMC225 MMC224 MMC223 MMC222 MMC221 MMC220 MMC219 MMC218 MMC217 MMC216 MMC215 MMC214 MMC213 MMC212 MMC211 MMC210 MMC209 MMC208 MMC207 MMC206 MMC205 MMC204 MMC203 MMC202 MMC201 MMC200 MMC199 MMC198 MMC197 MMC196 MMC195 MMC194 MMC193 MMC192 MMC191 MMC190 MMC189 MMC188 MMC187 MMC186 MMC185 MMC184 MMC183 MMC182 MMC181 MMC180 MMC179 MMC178 MMC177 MMC176 MMC175 MMC174 MMC173 MMC172 MMC171 MMC170 MMC169 MMC168 MMC167 MMC166 MMC165 MMC164 MMC163 MMC162 MMC161 MMC160 MMC159 MMC158 MMC157 MMC156 MMC155 MMC154 MMC153 MMC152 MMC151 MMC150 MMC149 MMC148 MMC147 MMC146 MMC145 MMC144 MMC143 MMC142 MMC141 MMC140 MMC139 MMC138 MMC137 MMC136 MMC135 MMC134 MMC133 MMC132 MMC131 MMC130 MMC129 MMC128 MMC127 MMC126 MMC125 MMC124 MMC123 MMC122 MMC121 MMC120 MMC119 MMC118 MMC117 MMC116 MMC115 MMC114 MMC113 MMC112 MMC111 MMC110 MMC109 MMC108 MMC107 MMC106 MMC105 MMC104 MMC103 MMC102 MMC101 MMC100 MMC99 MMC98 MMC97 MMC96 MMC95 MMC94 MMC93 MMC92 MMC91 MMC90 MMC89 MMC88 MMC87 MMC86 MMC85 MMC84 MMC83 MMC82 MMC81 MMC80 MMC79 MMC78 MMC77 MMC76 MMC75 MMC74 MMC73 MMC72 MMC71 MMC70 MMC69 MMC68 MMC67 MMC66 MMC65 MMC64 MMC63 MMC62 MMC61 MMC60 MMC59 MMC58 MMC57 MMC56 MMC55 MMC54 MMC53 MMC52 MMC51 MMC50 MMC49 MMC48 MMC47 MMC46 MMC45 MMC44 MMC43 MMC42 MMC41 MMC40 MMC39 MMC38 MMC37 MMC36 MMC35 MMC34 MMC33 MMC32 MMC31 MMC30 MMC29 MMC28 MMC27 MMC26 MMC25 MMC24 MMC23 MMC22 MMC21 MMC20 MMC19 MMC18 MMC17 MMC16 MMC15 MMC14 MMC13 MMC12 MMC11 MMC10 MMC9 MMC8 MMC7 MMC6 MMC5 MMC4 MMC3 MMC2 MMC1 MMC0

400RL 300RL 200RL 100RL

Long section A - B

0 100 200m

E **F**

Black Dog Pit Bobby McGee Pit

MMC470 MMC476 MMC489 MMC475 MMC398 MMC490 MMC491 MMC492 MMC493 MMC494 MMC495

400RL 300RL 200RL 100RL

Long section A - B

0 100 200m

2020 Block Model (WO₃)

- < 0.05% WO₃
- 0.05 - 0.075% WO₃
- 0.075 - 0.10% WO₃
- 0.10 - 0.15% WO₃
- 0.15 - 0.20% WO₃
- > 0.20% WO₃

Tungsten intersection > 0.05% WO₃

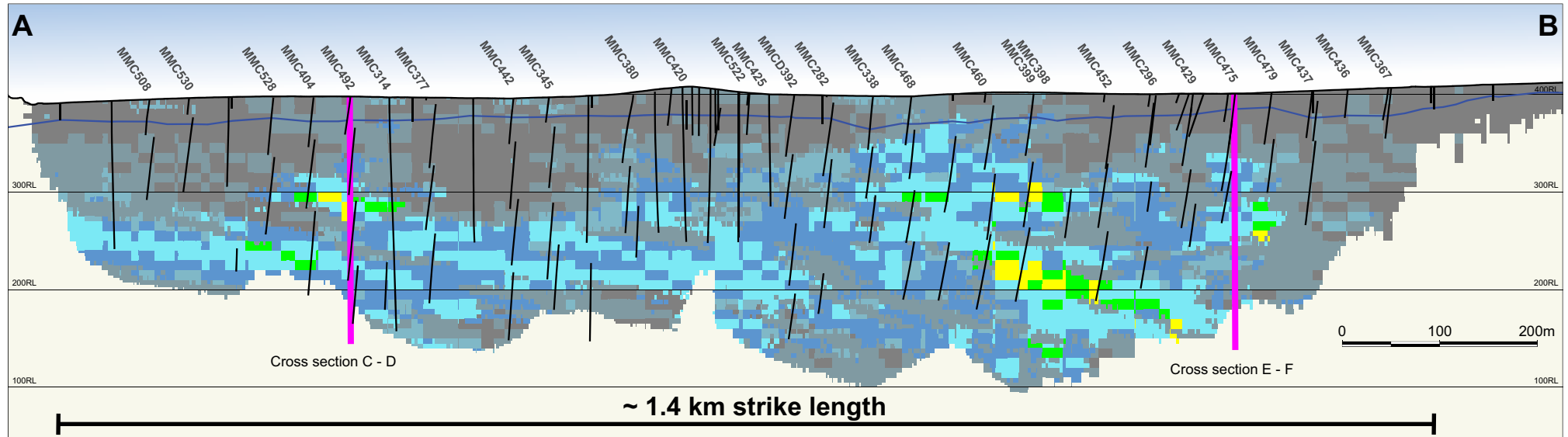
MMC426 TGN RC hole

Base of oxidation (interpreted)

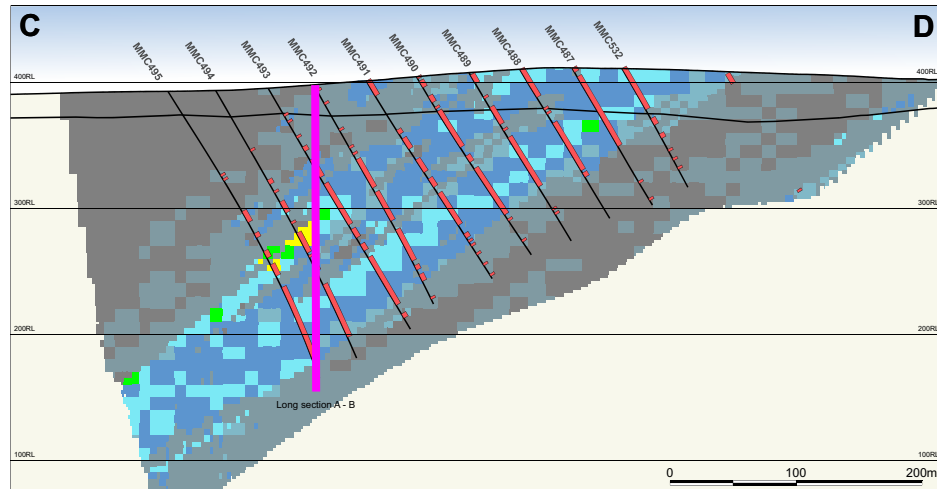
2020 Block Model
Indicated & Inferred Resource
247Mt @ 0.11% WO₃, 280 ppm Mo
(at 0.05% WO₃ cutoff)


Tungsten Mining NL · Quarterly Activities Report September 2020
7

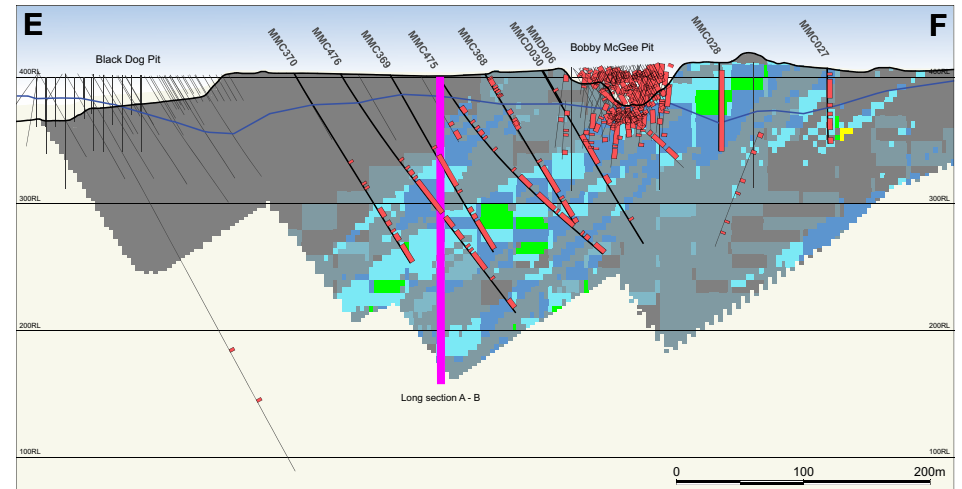
Mulgine Trench Long Section - Molybdenum



Cross section C - D



Cross section E - F



2020 Block Model
Indicated & Inferred Resource
247Mt @ 0.11% WO₃, 280 ppm Mo
(at 0.05% WO₃ cutoff)

2020 Block Model (Mo)

< 100 ppm Mo	350 - 500 ppm Mo	> 1000 ppm Mo
100 - 200 ppm Mo	500 - 800 ppm Mo	
200 - 350 ppm Mo	800 - 1000 ppm Mo	

Molybdenum intersection
> 0.02% Mo (200 ppm)

MMC429 TGN RC hole

Base of oxidation
(interpreted)

Figure 4. Long section (top) and cross sections (bottom) through Mulgine Trench showing molybdenum grades for the May 2020 Mineral Resource Block Model. These sections demonstrate stronger molybdenum mineralisation associated with the Lower Tungsten-Molybdenum domain.

Mulgine Trench Long Section: By-products

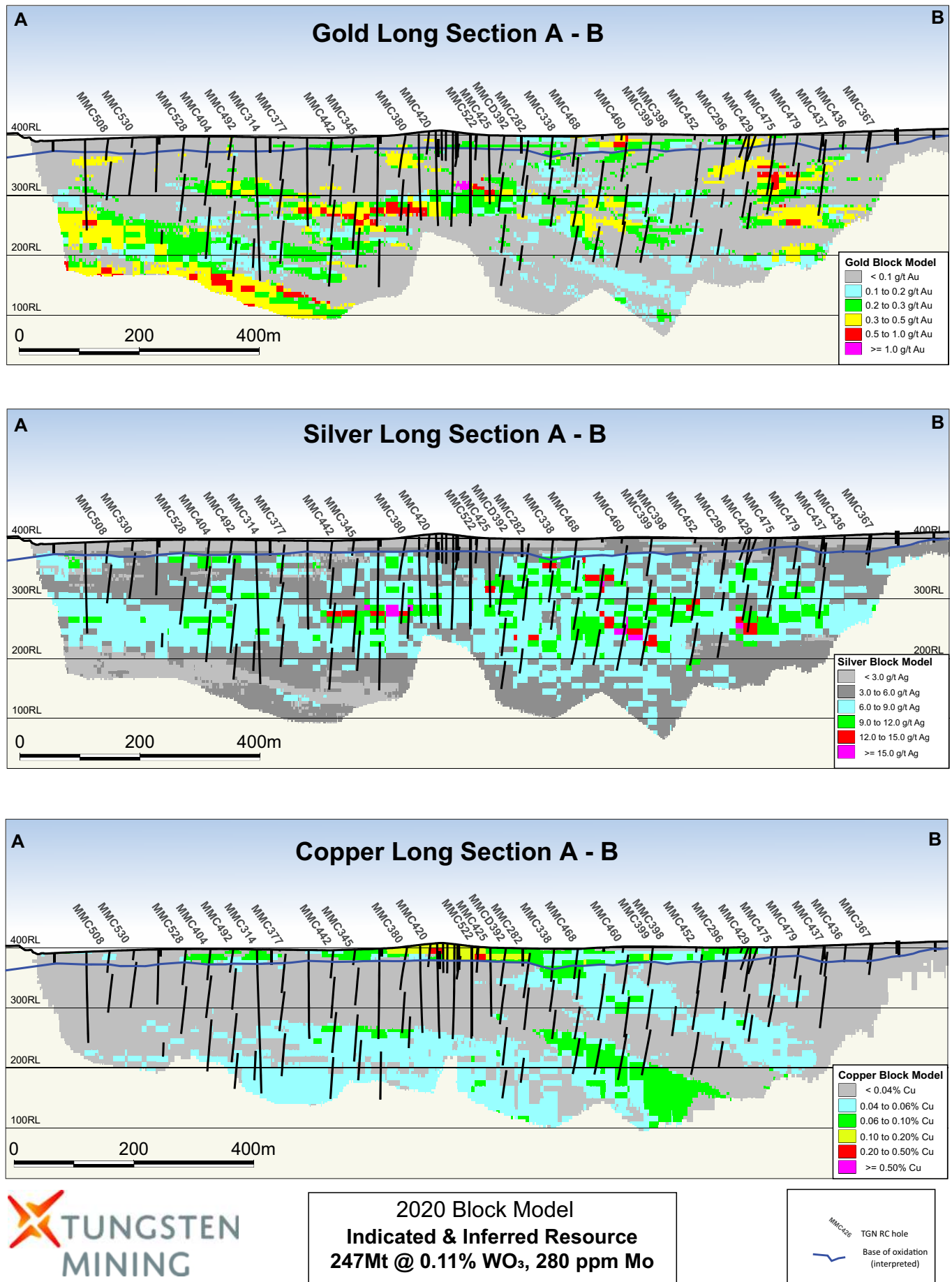


Figure 5: Long section through Mulgine Trench showing gold (top), silver (middle) and copper (bottom) grades for the May 2020 Mineral Resource Block Model. Stronger by-product mineralisation tends to be associated with the Lower Tungsten-Molybdenum domain.

Metallurgy

Geo-metallurgy

The Company, together with its consultants, completed the PFS phase of the geo-metallurgical model of the Mulgine Trench deposit. It is anticipated that further investment in the geo-metallurgical program will continue to de-risk the project moving forward.

Testwork

Further bulk testwork is currently being conducted to produce a copper and molybdenum concentrate. Gold and silver deportment to the copper concentrate will be evaluated as part of this work.

Environmental

The Native Vegetation Clearing Permit (NVCP) and Mining Proposal for the Hill deposit submitted in the March quarter remains subject to regulatory review and approval processes. The Company continues to engage with the regulatory bodies in order to finalise the review and approval process.

Other major activities during the September quarter were;

- completion of the surface water assessment;
- completion of the waste characterisation analysis;
- updating of the environmental exploration management plan and associated documentation, and
- updating of the legal compliance register and environmental commitments.

Mining

Mining consultants continued to complete the mine engineering work associated with the PFS, with the mine schedule completed in the September quarter. The mining operating costs and the mining capital costs have been developed.

Final work is being completed which will allow the declaration of a reserve in the December quarter.

Process and Non-Process Infrastructure

A peer review of the PFS process and non-process infrastructure design and cost estimates commenced in the quarter.

Other Projects

Hatches Creek Polymetallic Project, Davenport Province, NT

The Hatches Creek Project consists of two granted exploration licences covering 31.4 km² (EL22912 and EL23463), which cover the entire historic Hatches Creek tungsten mining centre. Hatches Creek is a large historical high-grade tungsten mining centre where mining was undertaken between 1915 and 1957. Previous recorded production is approximately 2,840 tonnes of 65% WO₃. Bismuth concentrate and copper ore have also been produced.

On 3 June 2019 the Company announced that it had executed an agreement with GWR Group Limited (ASX: GWR) ("GWR") to farm-in to the Hatches Creek Project. The Farm-in Agreement provides for Tungsten Mining to direct and manage exploration and development activities at Hatches Creek where past drilling by GWR confirmed multiple high-grade polymetallic tungsten prospects and demonstrated potential for a large high-grade polymetallic tungsten deposit (refer GWR announcements dated 17 July 2018 and 22 May 2019).

The Project is located 375 km north east of Alice Springs in the Northern Territory of Australia (Figure 6).

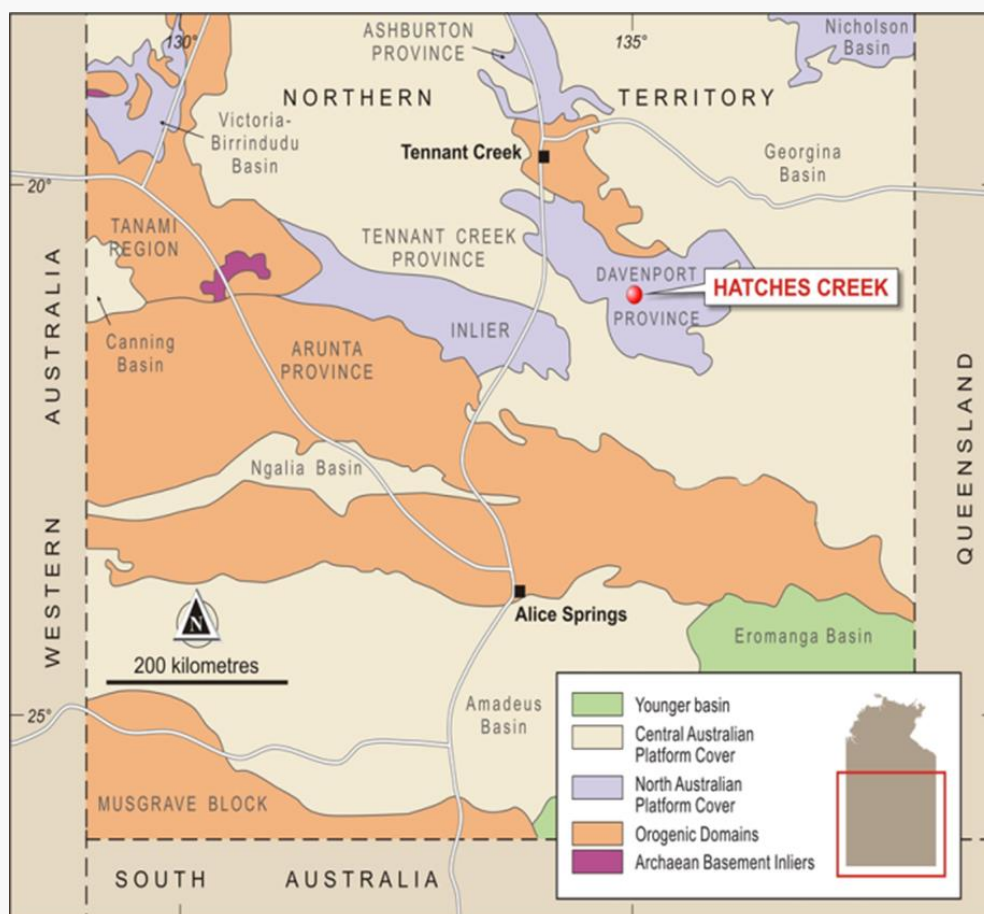


Figure 6. Hatches Creek Project location map

Pursuant to the terms of the Farm-in Agreement, summarised in the announcement dated 3 June 2019, the Company acquired an initial 20% interest in the Project by reimbursing GWR for past exploration expenditure. Tungsten Mining can increase its interest to 51% by the expenditure of \$3,000,000 on exploration, development and mining activities within 5 years of the commencement date. Should a decision to mine be made by Tungsten Mining whilst in the sole fund stage, the Company has an option to acquire GWR's remaining interest for \$6.96m (indexed for CPI).

A desktop review of historical geological reports to assist in targeting areas for potential resource development opportunities commenced in the September quarter.

Further details on the results of recent and past drilling programs, Mineral Resource Estimate for surface dumps and the Exploration Target Estimate for the Hatches Creek Project are set out in GWR's ASX announcements dated 17 July 2018 and 22 May 2019.

Watershed Project, Far North, Queensland

Watershed is located 130km north of Cairns in a mining friendly jurisdiction, with granted Mining Leases and an Environmental Authority for an open-pit development. Former project owner, Vital Metals Limited (Vital Metals) completed a Definitive Feasibility Study (DFS) for the project in 2014.

The Watershed Project substantially adds to Tungsten Mining's global resource inventory and boasts a JORC 2012 Mineral Resource Estimate of 49.3Mt grading 0.14% WO₃ comprising Measured Resources of 9.5Mt at 0.16% WO₃, Indicated Resources of 28.4Mt at 0.14% WO₃ and Inferred Resources of 11.5Mt at 0.15% WO₃ at a cut-off grade of 0.05% WO₃ (refer Vital Metals (VML) ASX announcement dated 4 July 2018 – Watershed Mineral Resources Restatement JORC Code 2012).

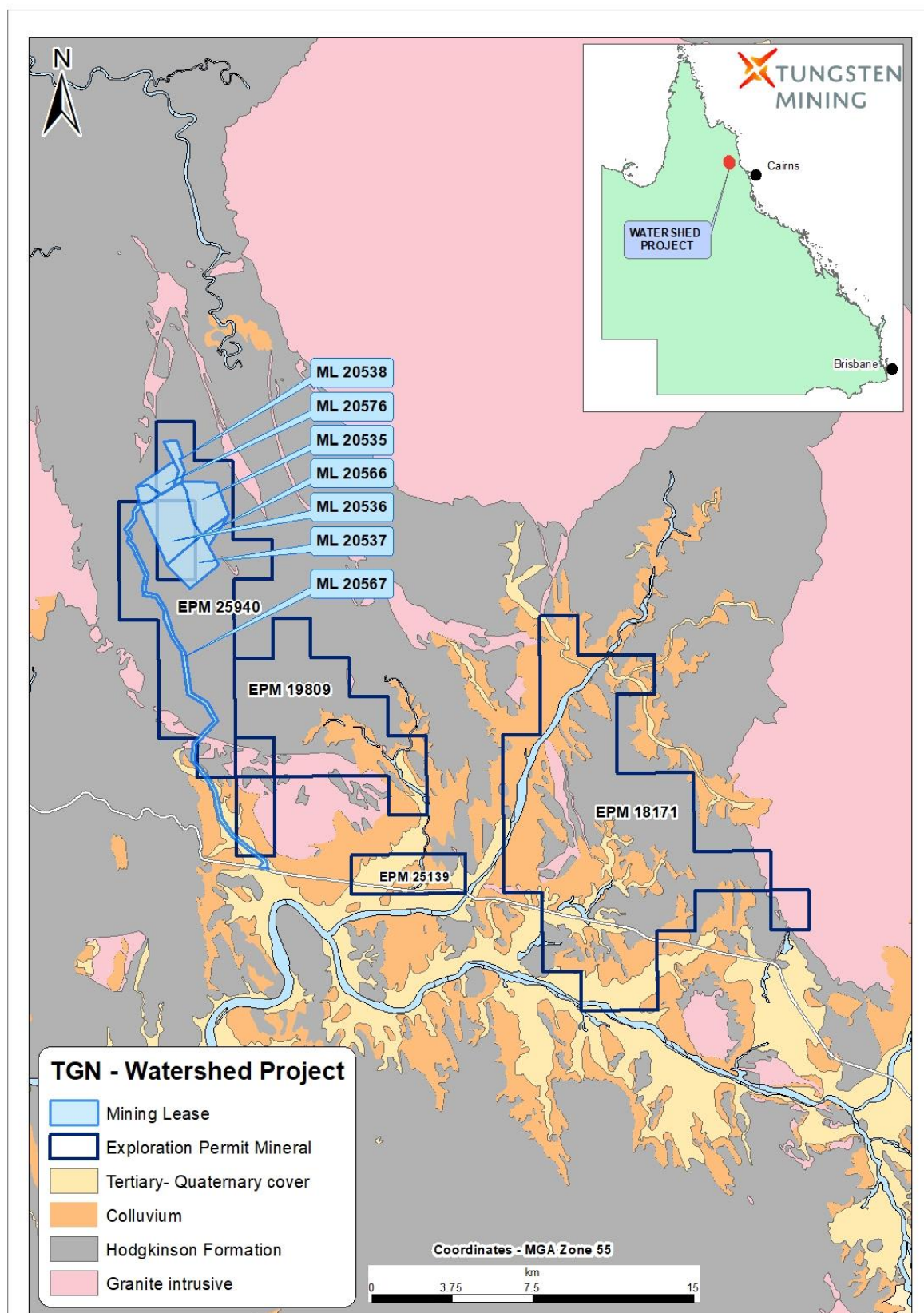


Figure 7. Watershed Project location map

Tungsten Mining progressed activities directed at rationalising the tenement holdings of North Queensland Tungsten Pty Ltd, a wholly owned subsidiary of Tungsten Mining, focusing on the exploration permits (EPM's) outside of the Watershed Project area of interest. During the quarter the Company entered into an agreement for the sale of EPM 19809, EPM25139 and EPM 18171 (refer to Corporate section).

Big Hill Project, Eastern Pilbara, WA

The Big Hill Project area is located approximately 30km northeast of the Nullagine township in the Eastern Pilbara of Western Australia. The project contains the Big Hill deposit where 22,871 metres of diamond and RC drilling have defined a JORC-2012 Mineral Resource Estimate totalling 38.5Mt at 0.09% WO₃ (0.05% WO₃ cut-off) comprising an Indicated Resource of 15.8Mt at 0.11% WO₃ and an Inferred Resource of 22.7Mt at 0.09% WO₃.

Metallurgical test work conducted on samples from Big Hill at bench and pilot scale has produced high quality tungsten concentrates at acceptable scheelite recoveries. This work has identified a simple and potentially low cost processing route.

In April 2020, DMIRS approved a 3 year extension to Retention License R46/3. There are no planned activities for the Big Hill Project in the next quarter.

Kilba Project, Ashburton Region, WA

The Kilba Project is located within the Ashburton Region of Western Australia, 250km southwest of Karratha. To date, Tungsten Mining has focused on the historic Zones 8, 11 and 12 that Union Carbide discovered in the 1970s. Drilling has targeted high-grade tungsten mineralisation associated with skarns and calc-silicate units situated close to the Kilba granite.

This work has defined a JORC-2012 compliant Mineral Resource Estimate totalling 7.2Mt at 0.19% WO₃ (0.05% WO₃ cut-off) comprising an Indicated Resource of 5.7Mt at 0.20% WO₃ and an Inferred Resource of 1.5Mt at 0.15% WO₃.

Metallurgical test work shows that the tungsten is present as coarse-grained scheelite that will respond well to conventional gravity separation. Test work completed in 2015 has demonstrated the ability to produce an extremely high grade tungsten concentrate.

In May 2017, DMIRS approved a 5 year exemption from expenditure for M08/314 pursuant to the Mining Act. There are no planned activities for the Kilba Project in the next quarter.

Other

The Callie Soak project is located in the Murchison Region of Western Australia. As part of the Company's ongoing tenement rationalisation activities, a sale agreement for the tenement was executed during the quarter (refer to Corporate section).

Corporate

Tungsten Pricing

Global tungsten prices (by reference to price quotations for European ammonium paratungstate – APT) fell by approximately 5% over the September quarter, as COVID-19 continued to disrupt markets. There was however some improvement in prices in the month September.

Critical Minerals

Tungsten remains a commodity of critical importance to global industry, a fact recognised by countries including USA, Japan, UK and the EU classifying tungsten as a “critical mineral”. In January 2020, the Australian Commonwealth government announced the opening of the Critical Minerals Facilitation Office (CMFO). The role of the CMFO is to position Australia globally as a secure and reliable supplier of critical minerals with tungsten classified as one of the top 10 critical minerals.

Tungsten Mining continues to engage with the CMFO and other relevant Commonwealth and State government departments to assist the development of the Company’s projects.

Sale of Tenements

As noted in this report, during the quarter the Company executed certain tenement sale agreements in pursuing a strategy of rationalising its tenement interests. The tenement sales comprised a combination of cash consideration, deferred cash consideration and royalty interests.

Other

During the June quarter payments to related parties amounted to \$141,625, comprising directors’ fees and director related consulting fees.

The Company’s cash position as at 30 September 2020 was \$21.47m.

This ASX announcement was authorised for release by Craig Ferrier, Chief Executive Officer of Tungsten Mining NL.

For further information:

Craig Ferrier

Chief Executive Officer

Ph: +61 8 9486 8492

E: craig.ferrier@tungstenmining.com

Mark Pitts

Company Secretary

Ph: +61 8 9316 9100

E: mark.pitts@tungstenmining.com.au

Competent Person's Statement

The information in this report that relates to Exploration Targets and Exploration Results is based on, and fairly represents, information and supporting documentation prepared by Peter Bleakley, who is a Member of the Australasian Institute of Mining and Metallurgy. Mr Bleakley is a full-time employee of the company. Mr Bleakley has sufficient experience that is relevant to the style of mineralisation and type of deposit under consideration and to the activity being undertaken to qualify as a Competent Person as defined in the 2012 Edition of the 'Australasian Code for Reporting of Exploration Results, Mineral Resources and Ore Reserves'. Mr Bleakley consents to the inclusion in the report of the matters based on his information in the form and context in which it appears.

The information in this report that relates to Mineral Resources at Mulgine Hill, Big Hill and Kilba are extracted from the reports titled 'Update on Activities at Mount Mulgine' released to the Australian Securities Exchange (ASX) on 12 April 2019, 'Big Hill June 2016 Mineral Resource Update' released to the ASX on 23 June 2016, and 'Kilba Mineral Resource Update' released to the ASX on 30 January 2015, all are available to view at www.tungstenmining.com. The information in this report that relates to Mineral Resource at Watershed is extracted from the report titled 'Watershed Mineral Resources Restatement JORC Code (2012)' released to the ASX on 4 July 2018 by Vital Metals Limited. The information in this report that relates to Mineral Resources at Mulgine Trench is extracted from the report titled 'Update of Mineral Resource Estimate for Mulgine Trench Deposit' released to the ASX on 4 May 2020 and available to view at www.tungstenmining.com. The Company confirms that it is not aware of any new information or data that materially affects the information included in the ASX announcement and that all material assumptions and technical parameters underpinning the estimates in original ASX announcements continue to apply and have not materially changed. The Company confirms that the form and context in which the Competent Person's findings are presented have not been materially modified from the original ASX announcements.

About Tungsten Mining

Emerging Australian tungsten developer, Tungsten Mining NL is an Australian based resources company listed on the Australian Securities Exchange. The Company's prime focus is the exploration and development of tungsten projects in Australia.

Tungsten (chemical symbol W), occurs naturally on earth, not in its pure form but as a constituent of other minerals, only two of which support current commercial extraction and processing - wolframite ((Fe, Mn)WO₄) and scheelite (CaWO₄).

Tungsten has the highest melting point of all elements except carbon – around 3400°C giving it excellent high temperature mechanical properties and the lowest expansion coefficient of all metals. Tungsten is a metal of considerable strategic importance, essential to modern industrial development (across aerospace and defence, electronics, automotive, extractive and construction sectors) with uses in cemented carbides, high-speed steels and super alloys, tungsten mill products and chemicals.

Through exploration and acquisition, the Company has established a globally significant tungsten resource inventory in its portfolio of advanced mineral projects across Australia. This provides the platform for the Company to become a major player within the global primary tungsten market through the development of low-cost tungsten concentrate production.



Tenement Summary

Tenement Name	Tenement	Interest held at 30 June 2020	Interest acquired/ disposed of during quarter	Interest Held at 30 September 2020
Kilba Well	E08/2139	100%	N/A	100%
Kilba Well	M08/314	100%	N/A	100%
Kilba Well	E08/2780	100%	N/A	100%
Callie Soak	E20/854	100%	100%	0%
Mt Mulgine*	E59/1324-I	100% mineral rights for tungsten and molybdenum	N/A	100% mineral rights for tungsten and molybdenum
Mt Mulgine*	M59/386-I	"	N/A	"
Mt Mulgine*	M59/387-I	"	N/A	"
Mt Mulgine*	M59/425-I	"	N/A	"
Mt Mulgine	P59/2244	100%	NA	100%
Mt Mulgine	L59/161	100%	N/A	100%
Mt Mulgine	L59/162	100%	N/A	100%
Big Hill	L46/70	100%	N/A	100%
Big Hill	R46/3	100%	N/A	100%
Watershed	ML20535	100%	N/A	100%
Watershed	ML20536	100%	N/A	100%
Watershed	ML20537	100%	N/A	100%
Watershed	ML20538	100%	N/A	100%
Watershed	ML20566	100%	N/A	100%
Watershed	ML20567	100%	N/A	100%
Watershed	ML20576	100%	N/A	100%
Watershed **	EPM18171	100%	N/A	100%
Watershed	EPM25940	100%	N/A	100%
Watershed **	EPM19809	100%	N/A	100%
Watershed **	EPM25139	100%	N/A	100%
Hatches Creek	EL22912	20%	N/A	20%
Hatches Creek	EL23463	20%	N/A	20%

* Certain Mt Mulgine tenements are registered in the name of Minjar Gold Pty Ltd with Mid-West Tungsten Pty Ltd (MWT), a subsidiary of Tungsten Mining NL being the holder of the Tungsten and Molybdenum Mineral Rights. MWT is the registered holder of Prospecting Licence P59/2244 and Miscellaneous Licenses L59/161 and 162.

** These tenements are the subject of a sale agreement entered into by North Queensland Tungsten Pty Ltd, a subsidiary of Tungsten Mining NL. On 30 September 2020, North Queensland Tungsten Pty Ltd was still the registered holder of these tenements.

Tungsten Mining NL – Resource Inventory at 0.05% WO₃ Cut-Off

Class	Million Tonnes	WO ₃ %	WO ₃ (Kt)	Mo (ppm)	Mo (Kt)	Au (g/t)	Au (Koz)	Ag (g/t)	Ag (Moz)	Cu %	Cu (Kt)
Mulgine Trench (May 2020) ¹											
Measured	-	-	-	-	-	-	-	-	-	-	-
Indicated	175	0.11	190	290	51	0.14	770	6	32	0.04	69
Inferred	72	0.11	80	250	18	0.10	230	5	12	0.03	24
Total	247	0.11	270	280	69	0.13	1,000	6	44	0.03	92
Mulgine Hill (June 2017) ²											
Measured	-	-	-	-	-	-	-	-	-	-	-
Indicated	8.3	0.18	15	128	1.1	-	-	-	-	-	-
Inferred	4.0	0.12	4.8	118	0.5	-	-	-	-	-	-
Total	12.3	0.16	20	125	1.5	-	-	-	-	-	-
Mt Mulgine (Total)											
Measured	-	-	-	-	-	-	-	-	-	-	-
Indicated	183	0.11	205	290	52	0.13	770	5	32	0.04	69
Inferred	76	0.11	85	240	18	0.09	230	5	12	0.03	24
Total	259	0.11	290	270	71	0.12	1,000	5	44	0.03	92
Watershed (July 2018) ³											
Measured	9.5	0.16	15	-	-	-	-	-	-	-	-
Indicated	28.4	0.14	40	-	-	-	-	-	-	-	-
Inferred	11.5	0.15	17	-	-	-	-	-	-	-	-
Total	49.3	0.14	70	-	-	-	-	-	-	-	-
Big Hill (June 2016) ⁴											
Measured	-	-	-	-	-	-	-	-	-	-	-
Indicated	15.8	0.11	17	-	-	-	-	-	-	-	-
Inferred	22.7	0.09	19	-	-	-	-	-	-	-	-
Total	38.5	0.09	36	-	-	-	-	-	-	-	-
Kilba (January 2015) ⁵											
Measured	-	-	-	-	-	-	-	-	-	-	-
Indicated	5.7	0.20	11.5	-	-	-	-	-	-	-	-
Inferred	1.5	0.15	2.2	-	-	-	-	-	-	-	-
Total	7.2	0.19	13.7	-	-	-	-	-	-	-	-
Total Resource Inventory											
Measured	9.5	0.16	15	-	-	-	-	-	-	-	-
Indicated	233	0.12	273	220	52	0.10	770	4	32	0.03	69
Inferred	111	0.11	124	160	18	0.06	230	3	12	0.02	24
Total	354	0.12	410	200	71	0.09	1,000	4	44	0.03	92

Note: Totals may differ from sum of individual numbers as numbers have been rounded in accordance with the Australian JORC code 2012 guidance on Mineral Resource reporting.

1. Refer ASX (Tungsten Mining) Announcement 4 May 2020, "Mineral Resource Estimate Update for Mulgine Trench Deposit".
2. Refer ASX (Tungsten Mining) Announcement 12 April 2019, "Update on Activities at Mt Mulgine".
3. Refer ASX (Vital Metals) Announcement 4 July 2018, "Watershed Mineral Resources Restatement JORC Code 2012".
4. Refer ASX (Tungsten Mining) Announcement 23 June 2016, "Big Hill June 2016 Mineral Resource Update".
5. Refer ASX (Tungsten Mining) Announcement 30 January 2015, "Kilba Mineral Resource Update".
6. The Resource table only includes projects where Tungsten Mining holds a 100% interest.

Appendix 5B

Mining exploration entity or oil and gas exploration entity quarterly cash flow report

Name of entity

Tungsten Mining NL

ABN

67 152 084 403

Quarter ended ("current quarter")

30 September 2020

Consolidated statement of cash flows		Current quarter \$A'000	Year to date (3 months) \$A'000
1.	Cash flows from operating activities		
1.1	Receipts from customers	20	20
1.2	Payments for		
	(a) exploration & evaluation	(732)	(732)
	(b) development	-	-
	(c) production	-	-
	(d) staff costs (see note 6)	(563)	(563)
	(e) administration and corporate costs	(336)	(336)
1.3	Dividends received (see note 3)	-	-
1.4	Interest received	47	47
1.5	Interest and other costs of finance paid	-	-
1.6	Income taxes paid	-	-
1.7	Government grants and tax incentives	55	55
1.8	Other (provide details if material)	-	-
1.9	Net cash from / (used in) operating activities	(1,509)	(1,509)

2.	Cash flows from investing activities		
2.1	Payments to acquire or for:		
	(a) entities	-	-
	(b) tenements	-	-
	(c) property, plant and equipment	(3)	(3)
	(d) exploration & evaluation	-	-
	(e) investments	-	-
	(f) other non-current assets	-	-

Consolidated statement of cash flows		Current quarter \$A'000	Year to date (3 months) \$A'000
2.2	Proceeds from the disposal of:		
	(a) entities	-	-
	(b) tenements	25	25
	(c) property, plant and equipment	-	-
	(d) investments	-	-
	(e) other non-current assets	-	-
2.3	Cash flows from loans to other entities	-	-
2.4	Dividends received (see note 3)	-	-
2.5	Other (security deposit)	-	-
2.6	Net cash from / (used in) investing activities	22	22

3.	Cash flows from financing activities		
3.1	Proceeds from issues of equity securities (excluding convertible debt securities)	-	-
3.2	Proceeds from issue of convertible debt securities	-	-
3.3	Proceeds from exercise of options	-	-
3.4	Transaction costs related to issues of equity securities or convertible debt securities	-	-
3.5	Proceeds from borrowings	-	-
3.6	Repayment of borrowings	-	-
3.7	Transaction costs related to loans and borrowings	-	-
3.8	Dividends paid	-	-
3.9	Other (provide details if material)	-	-
3.10	Net cash from / (used in) financing activities	-	-

4.	Net increase / (decrease) in cash and cash equivalents for the period		
4.1	Cash and cash equivalents at beginning of period	22,956	22,956
4.2	Net cash from / (used in) operating activities (item 1.9 above)	(1,509)	(1,509)
4.3	Net cash from / (used in) investing activities (item 2.6 above)	22	22
4.4	Net cash from / (used in) financing activities (item 3.10 above)	-	-

Mining exploration entity or oil and gas exploration entity quarterly cash flow report

Consolidated statement of cash flows		Current quarter \$A'000	Year to date (3 months) \$A'000
4.5	Effect of movement in exchange rates on cash held	-	-
4.6	Cash and cash equivalents at end of period	21,469	21,469

5.	Reconciliation of cash and cash equivalents at the end of the quarter (as shown in the consolidated statement of cash flows) to the related items in the accounts	Current quarter \$A'000	Previous quarter \$A'000
5.1	Bank balances	2,294	2,463
5.2	Call deposits	19,175	20,493
5.3	Bank overdrafts	-	-
5.4	Other (provide details)	-	-
5.5	Cash and cash equivalents at end of quarter (should equal item 4.6 above)	21,469	22,956

6.	Payments to related parties of the entity and their associates	Current quarter \$A'000
6.1	Aggregate amount of payments to related parties and their associates included in item 1	142
6.2	Aggregate amount of payments to related parties and their associates included in item 2	-
<i>Note: if any amounts are shown in items 6.1 or 6.2, your quarterly activity report must include a description of, and an explanation for, such payments.</i>		

7.	Financing facilities <i>Note: the term "facility" includes all forms of financing arrangements available to the entity. Add notes as necessary for an understanding of the sources of finance available to the entity.</i>	Total facility amount at quarter end \$A'000	Amount drawn at quarter end \$A'000
7.1	Loan facilities	-	-
7.2	Credit standby arrangements	-	-
7.3	Other (please specify)	-	-
7.4	Total financing facilities	-	-
7.5	Unused financing facilities available at quarter end		-
7.6	Include in the box below a description of each facility above, including the lender, interest rate, maturity date and whether it is secured or unsecured. If any additional financing facilities have been entered into or are proposed to be entered into after quarter end, include a note providing details of those facilities as well.		
	N/A		

	8. Estimated cash available for future operating activities	\$A'000
8.1	Net cash from / (used in) operating activities (item 1.9)	(1,509)
8.2	(Payments for exploration & evaluation classified as investing activities) (item 2.1(d))	-
8.3	Total relevant outgoings (item 8.1 + item 8.2)	(1,509)
8.4	Cash and cash equivalents at quarter end (item 4.6)	21,469
8.5	Unused finance facilities available at quarter end (item 7.5)	-
8.6	Total available funding (item 8.4 + item 8.5)	21,469
8.7	Estimated quarters of funding available (item 8.6 divided by item 8.3)	14
	<i>Note: if the entity has reported positive relevant outgoings (ie a net cash inflow) in item 8.3, answer item 8.7 as "N/A". Otherwise, a figure for the estimated quarters of funding available must be included in item 8.7.</i>	
8.8	If item 8.7 is less than 2 quarters, please provide answers to the following questions:	
8.8.1	Does the entity expect that it will continue to have the current level of net operating cash flows for the time being and, if not, why not?	
	Answer: N/A	
8.8.2	Has the entity taken any steps, or does it propose to take any steps, to raise further cash to fund its operations and, if so, what are those steps and how likely does it believe that they will be successful?	
	Answer: N/A	
8.8.3	Does the entity expect to be able to continue its operations and to meet its business objectives and, if so, on what basis?	
	Answer: N/A	
	<i>Note: where item 8.7 is less than 2 quarters, all of questions 8.8.1, 8.8.2 and 8.8.3 above must be answered.</i>	

Compliance statement

- 1 This statement has been prepared in accordance with accounting standards and policies which comply with Listing Rule 19.11A.
- 2 This statement gives a true and fair view of the matters disclosed.

Date: 30 October 2020



Authorised by:
Craig Ferrier – Chief Executive Officer

Mining exploration entity or oil and gas exploration entity quarterly cash flow report

Notes

1. This quarterly cash flow report and the accompanying activity report provide a basis for informing the market about the entity's activities for the past quarter, how they have been financed and the effect this has had on its cash position. An entity that wishes to disclose additional information over and above the minimum required under the Listing Rules is encouraged to do so.
2. If this quarterly cash flow report has been prepared in accordance with Australian Accounting Standards, the definitions in, and provisions of, *AASB 6: Exploration for and Evaluation of Mineral Resources* and *AASB 107: Statement of Cash Flows* apply to this report. If this quarterly cash flow report has been prepared in accordance with other accounting standards agreed by ASX pursuant to Listing Rule 19.11A, the corresponding equivalent standards apply to this report.
3. Dividends received may be classified either as cash flows from operating activities or cash flows from investing activities, depending on the accounting policy of the entity.
4. If this report has been authorised for release to the market by your board of directors, you can insert here: "By the board". If it has been authorised for release to the market by a committee of your board of directors, you can insert here: "By the [name of board committee – eg Audit and Risk Committee]". If it has been authorised for release to the market by a disclosure committee, you can insert here: "By the Disclosure Committee".
5. If this report has been authorised for release to the market by your board of directors and you wish to hold yourself out as complying with recommendation 4.2 of the ASX Corporate Governance Council's *Corporate Governance Principles and Recommendations*, the board should have received a declaration from its CEO and CFO that, in their opinion, the financial records of the entity have been properly maintained, that this report complies with the appropriate accounting standards and gives a true and fair view of the cash flows of the entity, and that their opinion has been formed on the basis of a sound system of risk management and internal control which is operating effectively.
6. These staff costs of \$563K include exploration and evaluation related staff costs of approximately \$400K for the current quarter.